

Creek

# LAND AUCTION

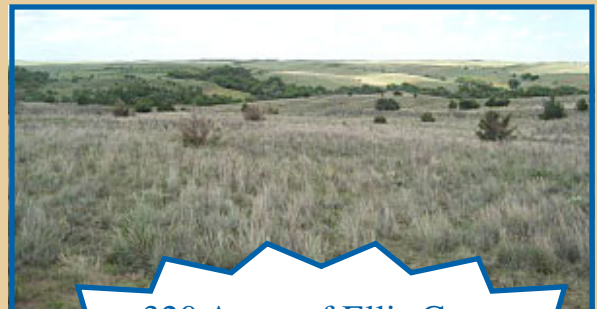
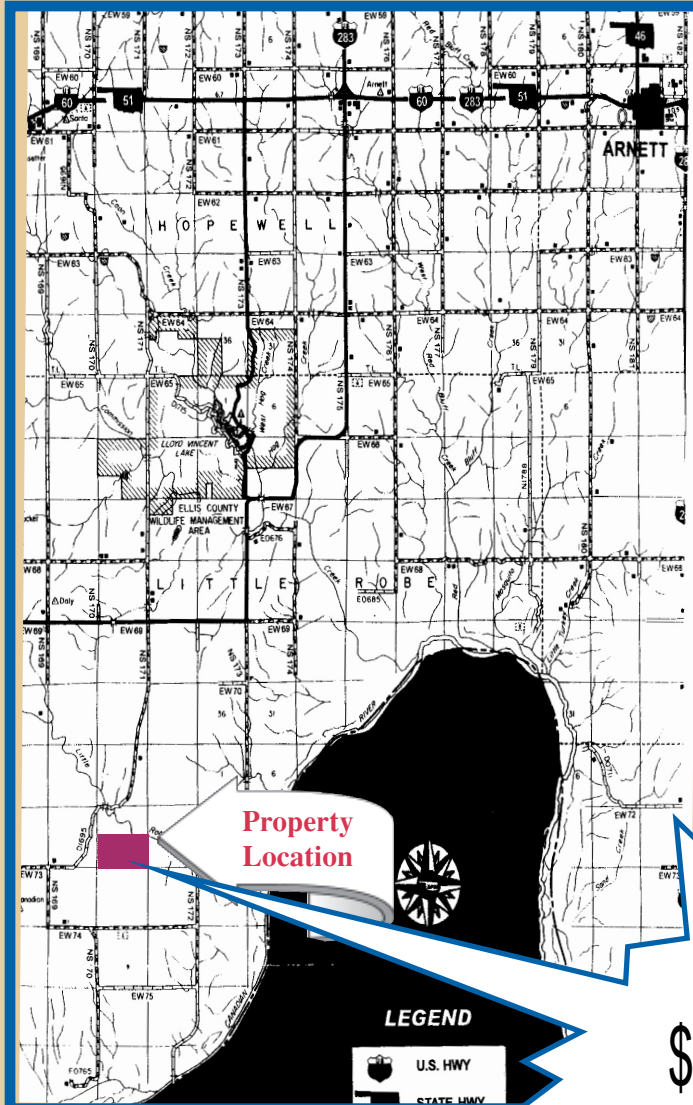
Hunting

## THURSDAY, AUGUST 6, 2009 • 10:30 A.M.

### Sale Location: Ellis County Fairgrounds Highway 15, East side of Shattuck, OK

Property is located @ EW73 and NS170. From Shattuck travel 9 miles South on US Highway 283 to US 60 Junction. Continue South on County Road NS175 following blacktop 10 1/2 miles, go 2 miles West on EW69, continue South on NS171, 4 1/2 miles to property. *Watch for Signs.*

**LEGAL:** The surface only of the South 1/2 of Section 10, T17N, R26W, Ellis County, OK.



320 Acres of Ellis County  
Grassland  
Deer, Turkey, Quail  
Running Creek



**SOLD!**  
\$256,000.00



**TERMS:** 10% of sale price to be placed in escrow, remainder upon closing. Taxes to be prorated to day of closing. Closing costs will be divided between buyer and seller as set forth on sales contract to be executed by successful bidder day of sale. Buyer will have 30 days for title examination. Sale is subject to sellers confirmation. All announcements made sale day supercede all advertisement. Buyers should satisfy themselves as to condition, boundaries, fences.

**AUCTIONEER'S NOTE:** *This sale is a rare opportunity to purchase 320 Acres of well cared for grassland. The Little Robe Creek crosses into the property on the North boundary. This is a great place. Don't miss this sale!*

## SELLER: Donna Stout Byars



**Robert Young** Real Estate Broker  
Residential, Commercial, Farms/Ranches

Stuart  
Keffer &   
Schoenhals  
Inc.  
**938-2326**



312 S. Main • Shattuck

sksinsurance.com • Cell: 580-938-1500

Walt Wagon 939-2281 • Mike "Hoss" Manske 334-5613 • Jenny Scott 571-5736